

# Scalable, dedicated high-performance Internet access

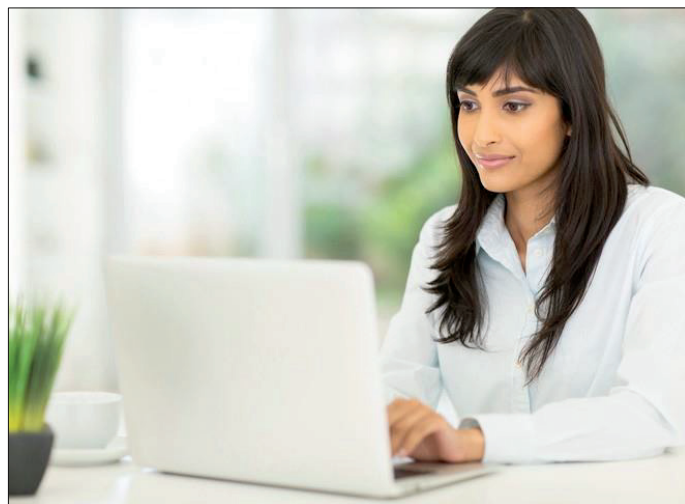
## Internet Connect – Dedicated Internet Access service from Bell

Meet your customers' needs for high-bandwidth, cost-effective and reliable Internet to support critical applications with Bell Internet Connect – Dedicated Internet Access (IC-DIA).

By bundling Internet access and transit together, IC-DIA provides a complete solution with the speed and performance your subscribers demand – delivered over Canada's largest fibre optic network.

### Benefits of IC-DIA service

- **Performance:** Our robust service level agreements ensure high availability.
- **Scalability:** With IC-DIA, you get multiple bandwidth and access options to meet evolving customer needs.
- **Reliability and reach:** Our fully redundant, state-of-the-art core and built-in network diversity ensures high reliability and connectivity from coast-to-coast-to-coast in Canada.
- **Expert support:** Bell's highly trained, professional help desk staff and technical support teams are available 24/7 to address your needs.



### Key features of IC-DIA from Bell

Our IC-DIA service offers flexible, secure and dedicated Internet connectivity. You get:

- Scalable bandwidth at speeds from 1 Mbps to 1 Gbps.
- Dedicated point-to-point access speeds of 10BT, 100BT or GigE Ethernet.
- Easy, insightful web-based usage monitoring and reporting.



**Bell**

## About Bell Wholesale

Bell Wholesale provides industry-leading broadband, IP and voice wholesale products and services across Canada and at key points in the U.S. and Europe – helping you grow your businesses and meet the needs of your customers.

As Canada's largest communications company, Bell has more than 270,000 kilometres of fibre and 161 Points of Presence (PoP) across the country, the most in Canada. Our convenient “meet me” points in the U.S. and Europe provide seamless access to the largest network in Canada.

With an extensive team of professional services experts and 24/7 help desk availability, Bell provides high-quality support to interexchange carriers, local exchange carriers, wireless service providers, resellers, Internet service providers, over-the-top providers, system integrators, telcos and cablecos.



For more information, visit [bell.ca/wholesale](https://bell.ca/wholesale)



**Bell**